



Bike Track

Conklin Park

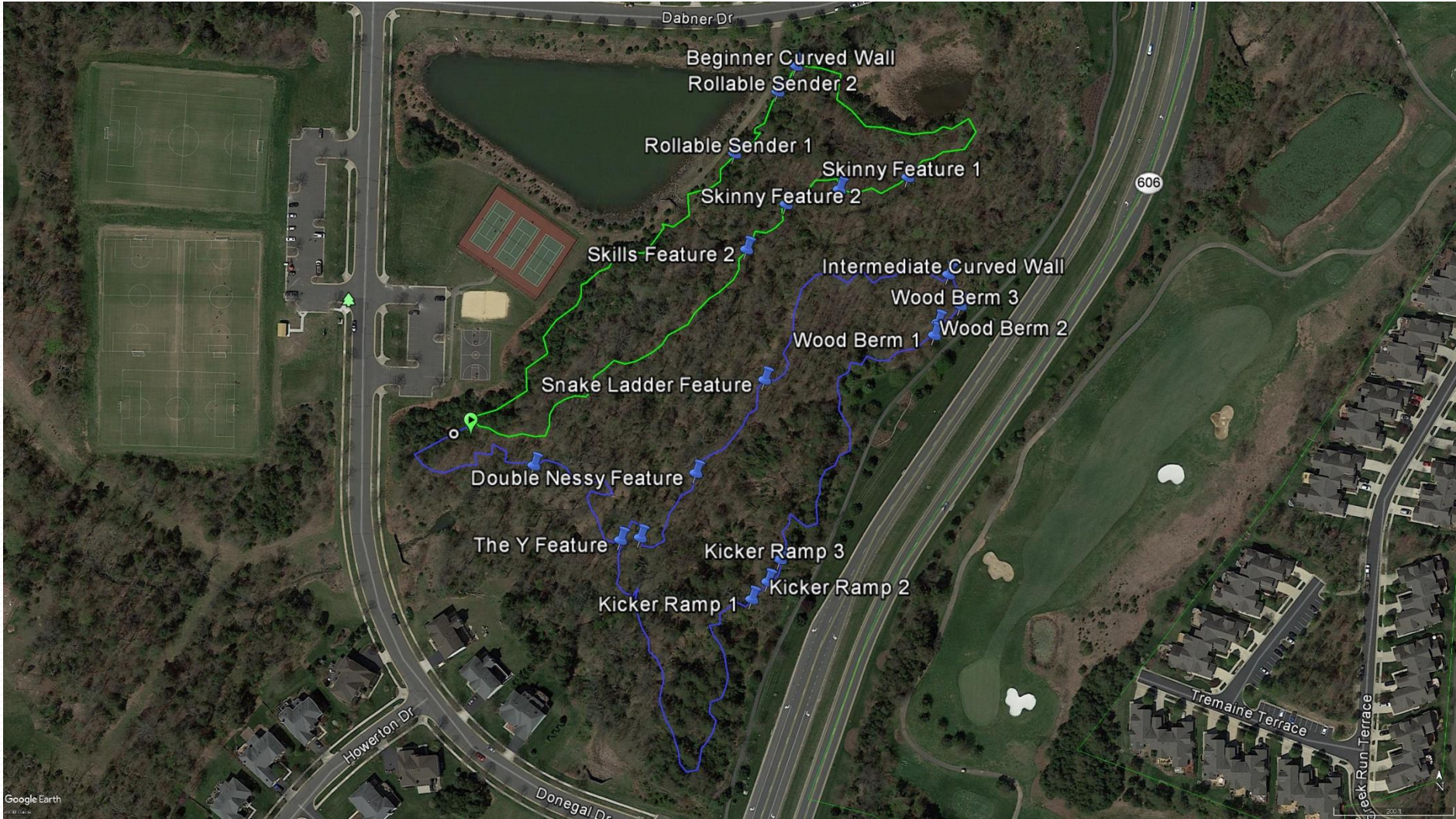




Conklin Park Trail Plan

Legend







Example of Trail



Trail Head

Bridge over Creek



Various Ladder Bridges over wet areas



Rock Armored water crossing

Wall ride at end of flow section

Flow Berm Section

Jump Section with Kickers

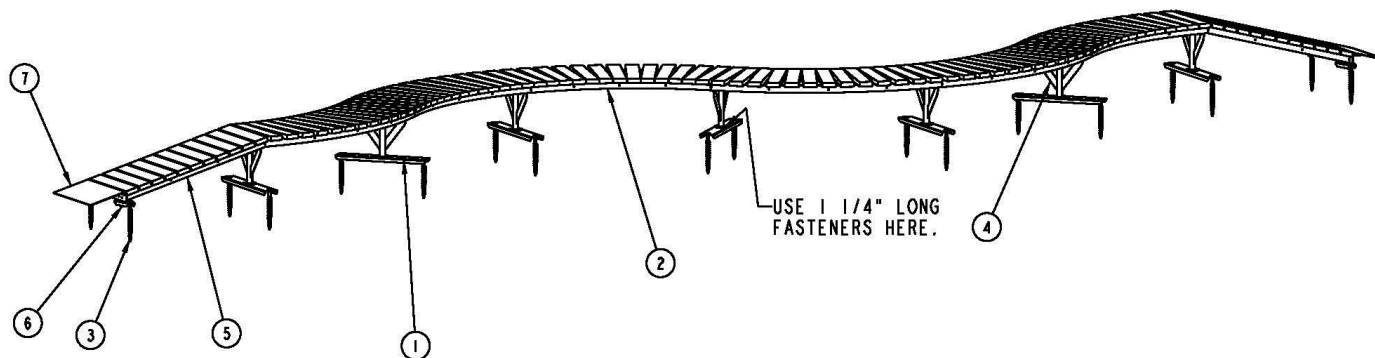


Skills Feature Area



Snake Ladder





REVISION HISTORY			
REV	DESCRIPTION	REVISED	DATE

7	170200026	TOE PLATE, 36" WIDE, PROGRESSIVE TRAIL	2
6	170510506	SCREW ANCHOR PLATE, SINGLE, PROGRESSIVE TRAIL	4
5	170110000W	RAMP R/LIMBER, 15 DEG, 2" HIGH, 5" WIDE, PROGRESSIVE TRAIL	2
4	170200008	FIXED LEG, 2" HIGH, 36" WIDE, PROGRESSIVE TRAIL	7
3	170460024	EARTH ANCHOR, 18" LONG, PROGRESSIVE TRAIL	18
2	170110213W	CURVED SECTION R/WOOD, 18" RAD, 36" WIDE, PROGRESSIVE TRAIL	6
1	170510502	ANCHOR CHAMMEL, 42", PROGRESSIVE TRAIL	7
ITEM	PART NUMBER	DESCRIPTION	QTY

TOLERANCES

UNLESS OTHERWISE SPECIFIED

(X.X) : ± 0.125

(X.XX) : ± 0.060

(X.XXX) : ± 0.030

ANGULAR : $\pm 1.0^\circ$

DIMENSIONS ARE IN INCHES

DRAWN BY: R. BOOTS 11-17-16

RELEASE LEVEL

Concept



AMERICAN RAMP COMPANY

PROPRIETARY

THIS DOCUMENT CONTAINS

PROPRIETARY DATA

BEARING TO

AMERICAN RAMP COMPANY.

IT IS NOT TO BE

COPIED OR DISTRIBUTED

TO ANYONE WITHOUT

WRITTEN PERMISSION.

REVISION

LEVEL

--

DATE

(FMM/DD/YY)

1484.1

601 MCINTLEY
JOPLIN, MO. 64801
PHONE: (417) 206-6810
FAX: (417) 206-6868
www.americanrampcompany.com

SNAKE LADDER, 2' HIGH

36" WIDE, PBR

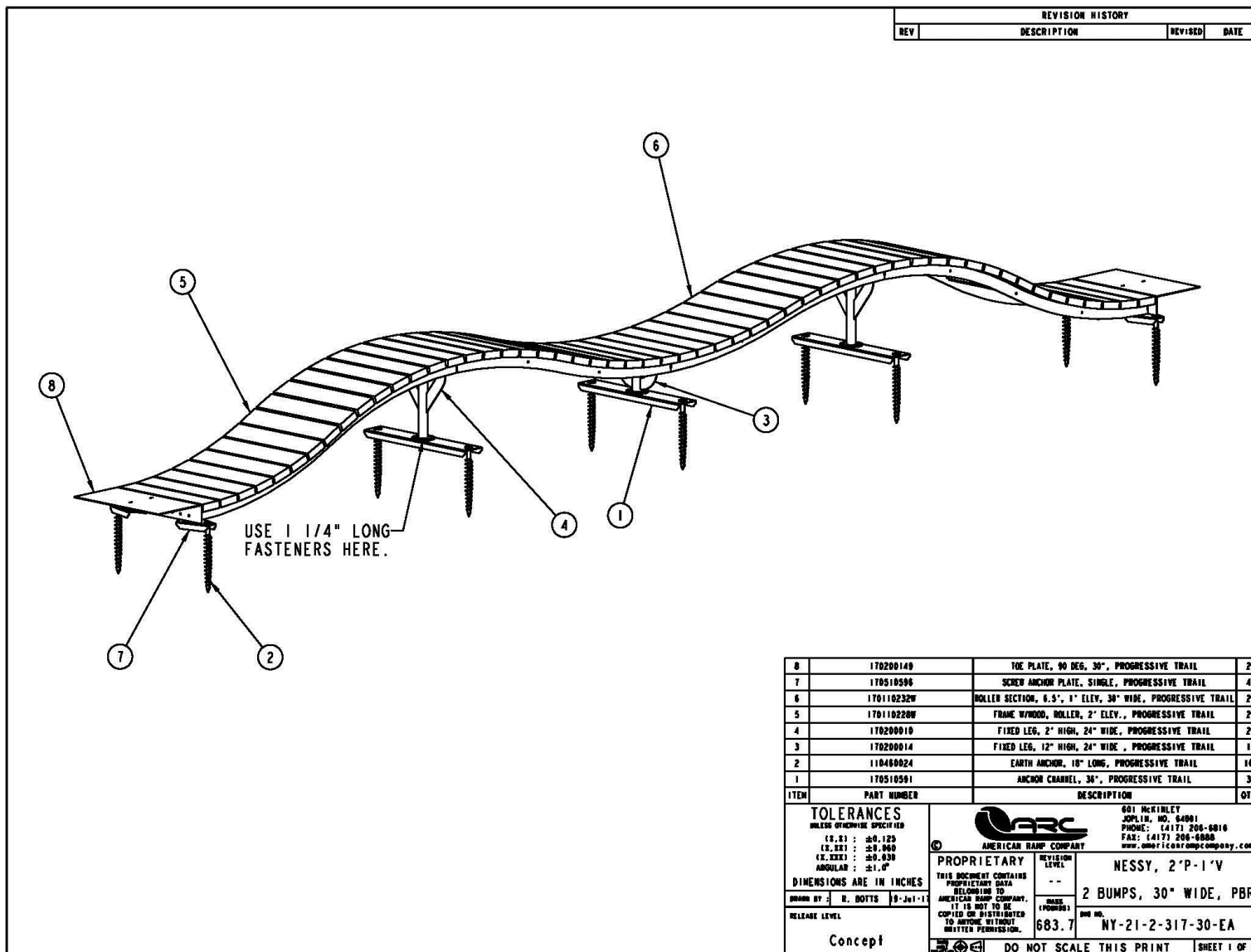
ONE NO.

SNK-2-573-36-EA

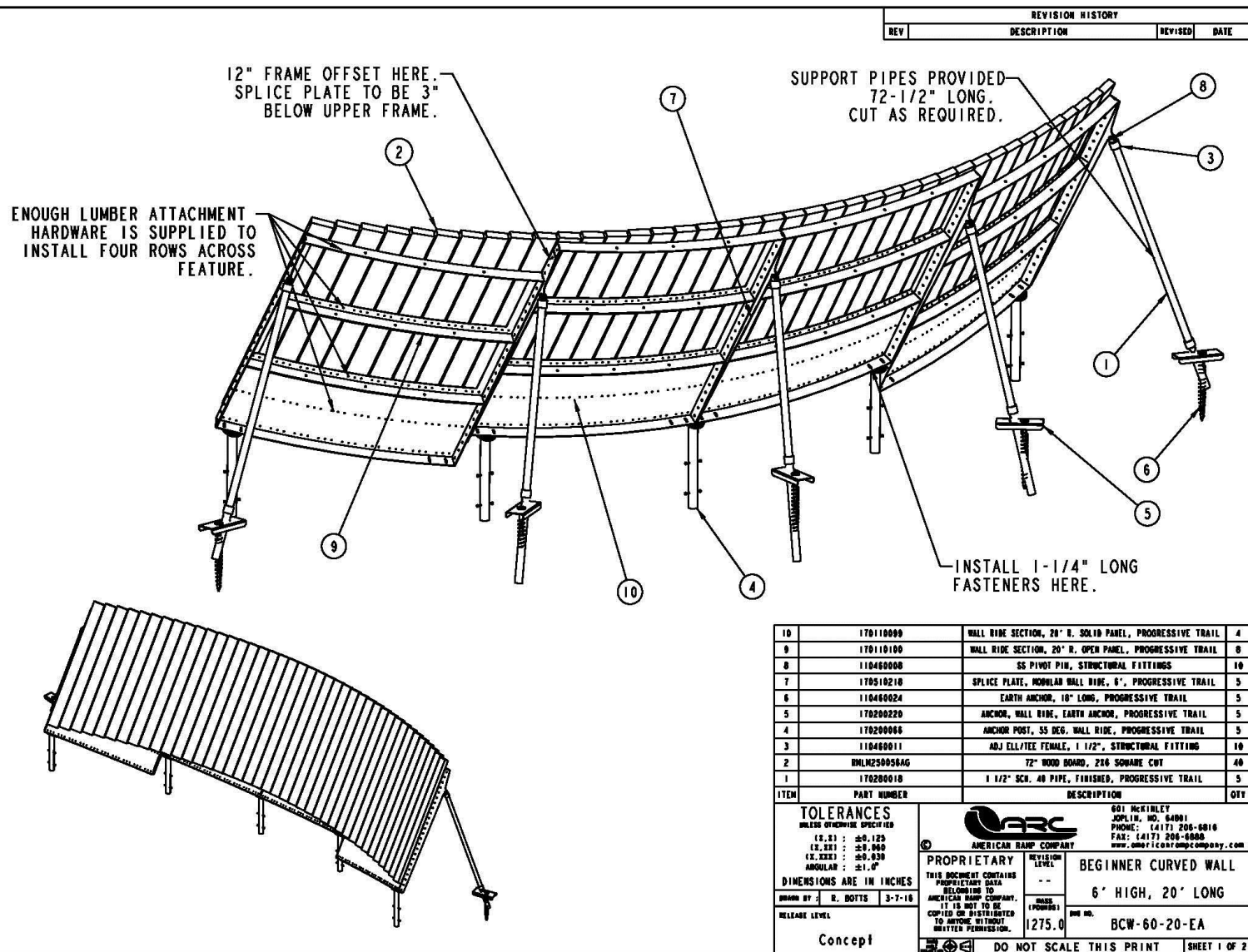
DO NOT SCALE THIS PRINT

SHEET 1 OF 2















View of homes from track



Homes opposite side of creek



Existing condition



Why at this location?

- The Open Space committee and Board of Directors identified a need for amenities for tweens and adults.
- It's the largest open parcel within SRP.
- Loudoun County will maintain and insure the track.
- There is minimal impact on adjacent homes.

Project Timeline

- Community Meeting April 11th
- Final Budget preparation early May.
- SRP Final Board decision May 3rd
- Loudoun County to Complete review and approval
(possibility track route or feature placement could be altered slightly to accommodate flood plain issues)
- Loudoun County to do plan review and pull grading permit
- Clearing and construction June- August

Q&A Submitted

- What is emergency response plan for the track?
 - All jumps will have a GPS location provided for emergency response
- Who will inspect and perform inspections and maintenance?
 - Loudoun County Parks and Recreation
- Is there a signage plan?
 - Yes and it will be provided to the county for final approval .
- Will pedestrians be permitted?
 - Yes

Q&A Continued

- Who do we call if there is disruptive behavior such as after hours use or loud noise?
 - Loudoun County Sherriff non emergency number which will be posted at the park.
- Will there be an entry from Loudoun County PKWY?
 - Not anticipated at this time.



Questions?